

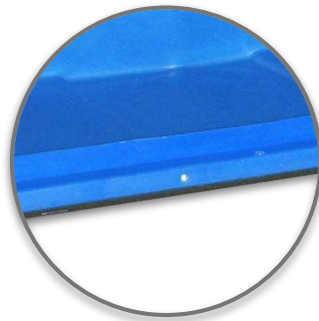
# RTC-6829-H6 HIGH CAPACITY ELECTION CART



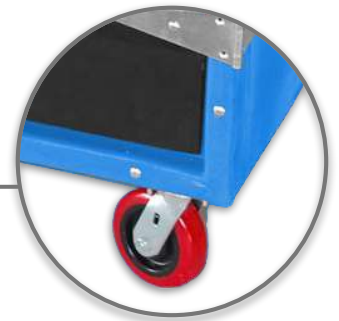
59.5 Cu. Feet of Internal Storage



$\frac{3}{4}$ " Plywood Shelves in Multiple Configurations



$\frac{3}{4}$ " Painted Plywood Base



Heavy Duty 6" Poly on Poly Casters



## FEATURES



Choice of fourteen colors



Fully enclosed shell blocks rain, dust & spills during transit



Constructed of impact, moisture and chemical resistant material



100% recyclable polyethylene supports ESG/green procurement



Customizable door options + padlock compatible bolt closures

# RTC-6829-H6 HIGH CAPACITY ELECTION CART



**Hinged 1/2" Plywood  
Doors w/ ABS Laminate**

**13" X 18" Vinyl  
Document Pouch**

**Twin Recessed Barrel  
Bolt Locks**

**13" Grab Handles**

| DIMENSIONS      |  | LENGTH     | WIDTH       | HEIGHT/DEPTH |
|-----------------|--|------------|-------------|--------------|
| Outside Top     |  | 60.0"      | 30.0"       | 75.0"        |
| Inside Top      |  | 59.0"      | 26.5"       | 66.0"        |
| INTERNAL VOLUME |  | CUBIC FEET | BUSHELS     | GALLONS      |
| Capacity        |  | 59.5       | 48          | 344          |
| WEIGHT CAPACITY |  |            | TARE WEIGHT |              |
| 1,100 lbs       |  |            | 323 lbs     |              |

# RTC-6829-H6 SHELF CONFIGURATIONS



One Centered Shelf  
With Two 24" Levels



One Upper Shelf With 16" Upper  
Level and 32" Lower Level



One Lower Shelf With 32" Upper  
Level and 16" Lower Level



One Centered Shelf With  
Two 24" Levels



One Upper Shelf With 16" Upper  
Level and 32" Lower Level



One Lower Shelf With 32" Upper  
Level and 16" Lower Level



Three Shelves with Four  
16" Levels



Custom Shelving



No Shelves